



THE  
ESSENTIAL  
EDIT

DIGITAL DESIGN BOOK SS25

CLARKE & CLARKE



# THE ESSENTIAL EDIT



Celadon



Snow



Nude



Glade



Pebble



Tamarind



Forest



Seal



Turmeric

---

Clarke & Clarke's extensive portfolio of plains has been developed over the years to create a toolkit of fabrics for designers.

---

Sophisticated, durable and highly useable, each plain in the library has been designed to coordinate in schemes for a full, unmistakably Clarke & Clarke look. Bringing together this extensive portfolio, The Essential Edit highlights Clarke & Clarke's perfect plains, go-to fabrics for interiors, and design favourites. With a variety of performance qualities, textures, and an expansive colour palette, every collection offers something different in tactile quality, application, and finish, for a comprehensive selection of contract fabrics in a wide spectrum of colours.





## LINOSO WIDE WIDTH

---

**The Linoso collection features a textured linen appearance in a beautiful array of nature-inspired shades, elegant and enduring for contract and drapery projects.**

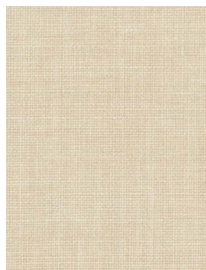
---

An evolution of the Linoso plain, the Linoso Wide Width comes in three-metre widths and is perfect for contract use. Featuring a textured linen appearance, in a beautiful array of nature-inspired shades, the Linoso Wide Width is both elegant and enduring for contract and drapery projects.

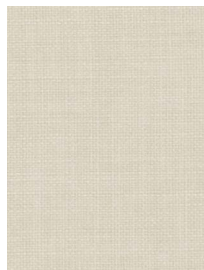


# LINOSO WIDE WIDTH FABRIC INDEX

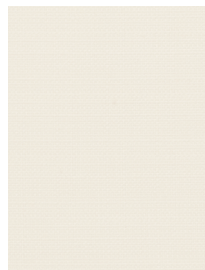
---



BUFF F1777/03



CREAM F1777/07



NATURAL F1777/18



POLAR F1777/19



FEATHER F1777/10



HEATHER F1777/13



LINEN F1777/14



SESAME F1777/20



CAYENNE F1777/04



BRICK F1777/02



CLOUD F1777/06



MINERAL F1777/15



TEAL F1777/25



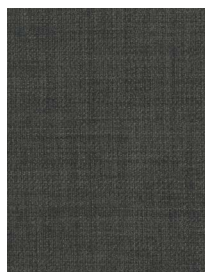
DENIM F1777/08



AEGEAN F1777/01



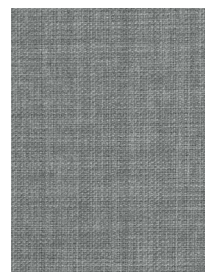
CHARCOAL F1777/05



SMOKE F1777/21



GRAPHITE F1777/11



STORM F1777/23



DOVE F1777/09



GREY F1777/12



MUSHROOM F1777/17



TAUPE F1777/24



MIST F1777/16



STEEL F1777/22



## ALVAR

---

**Alvar is a highly versatile velvet and a go-to fabric for designers.**

---

With a matt finish and incredibly soft handle, Alvar's appeal lies in its adaptability for drapes, upholstery and cushions, perfect for contract usage. With inherent water and stain resistance due to the velvet construction, Alvar is an impressive fabric in an extensive colour line of 101 sumptuous shades. From the neutrals of biscotti to the jewel tones of jade, kingfisher and midnight, this rich plain velvet can be used effortlessly in homes and across contract applications.



# ALVAR FABRIC INDEX

---

								
SNOW F0753/47	IVORY F0753/74	CREAM F0753/34	VANILLA F0753/101	BIRCH F0753/26	BISCOTTI F0753/52	SAND F0753/13	TAUPE F0753/16	CLAY F0753/57
								
BARK F0753/24	OAK F0753/86	MOCHA F0753/07	MINK F0753/79	BEAVER F0753/25	BRACKEN F0753/28	CHOCOLATE F0753/32	ESPRESSO F0753/36	ASH F0753/23
								
COBBLE F0753/03	PEBBLE F0753/88	DOVE F0753/61	MOLE F0753/80	SILVER F0753/96	MIST F0753/44	MUSHROOM F0753/82	SEAL F0753/94	SLATE F0753/14
								
CHARCOAL F0753/02	EBONY F0753/35	GRAPHITE F0753/68	LIME F0753/78	CITRON F0753/33	LEAF F0753/77	OLIVE F0753/09	THYME F0753/98	SAGE F0753/46
								
HERB F0753/40	CHIVE F0753/31	HUNTER F0753/73	CHARTREUSE F0753/56	HONEY F0753/72	GOLD F0753/39	ANTIQUÉ F0753/21	OCHRE F0753/08	HARVEST F0753/70
								
LARK F0753/41	TURMERIC F0753/100	FLAXEN F0753/64	GLADE F0753/66	BAY LEAF F0753/51	KINGFISHER F0753/76	SPRUCE F0753/48	JADE F0753/75	BLUEBIRD F0753/53

---

Click on the product images to discover more.

# ALVAR FABRIC INDEX CONTINUED



TEAL F0753/17



PEACOCK F0753/87



AGEAN F0753/19



ARCTIC F0753/22



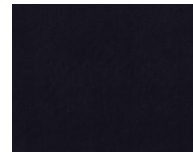
AQUA F0753/01



EAU DE NIL F0753/62



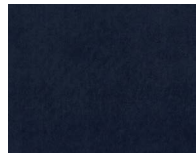
MIDNIGHT F0753/43



NAVY F0753/83



INDIGO F0753/06



ROYAL BLUE F0753/13



DENIM F0753/60



WEDGEWOOD F0753/18



AIRFORCE F0753/49



TOPAZ F0753/99



ROSE F0753/45



BLUSH F0753/27



QUARTZ F0753/91



PETAL F0753/90



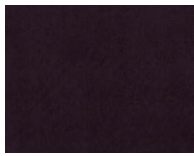
BUFF F0753/55



DAMSON F0753/59



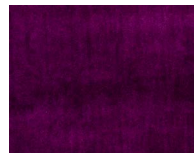
GRAPE F0753/67



MULBERRY F0753/81



CRANBERRY F0753/58



PLUM F0753/10



HEATHER F0753/05



LAVENDER F0753/42



AMETHYST F0753/50



RASPBERRY F0753/11



PEONY F0753/89



CANDY F0753/29



FUCHSIA F0753/04



BORDEAUX F0753/54



RUBY F0753/12



FLAME F0753/37



FLAMINGO F0753/38



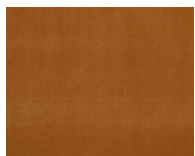
AMBER F0753/20



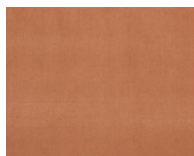
SUNSET F0753/15



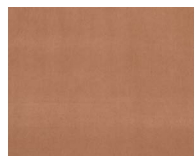
HENNA F0753/71



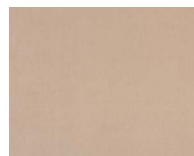
NUTMEG F0753/85



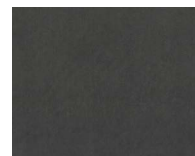
TAMARIND F0753/97



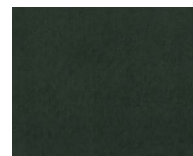
SIENNA F0753/95



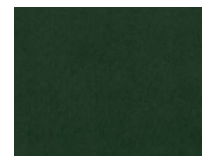
NUDE F0753/84



GUNMETAL F0753/69



FOREST F0753/65



EMERALD F0753/63



CELADON F0753/30



ROEBUCK F0753/92



## AMALFI

---

**Coastal hues and linen textures create a relaxed feel in interiors.**

---

This textured plain ticks all boxes for laid-back living. Available in 66 colours, which vary from on-trend coral and jade to calming dove and pebble shades, Amalfi is durable, with a soft handle and suitable for drapery, blinds, upholstery and all other decorative applications.



# AMALFI FABRIC INDEX



POLAR F1239/50



IVORY F1239/31



PARCHMENT F1239/47



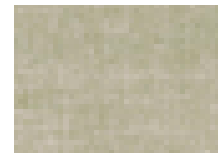
LINEN F1239/36



PEBBLE F1239/48



PUTTY F1239/52



BIRCH F1239/05



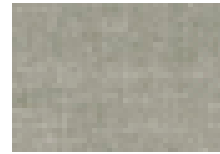
SHINGLE F1239/58



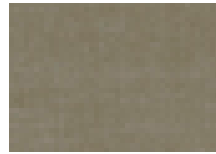
OATMEAL F1239/44



ALABASTER F1239/01



SHALE F1239/57



MINK F1239/39



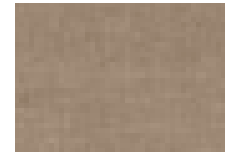
TRUFFLE F1239/65



LATTE F1239/35



MOCHA F1239/40



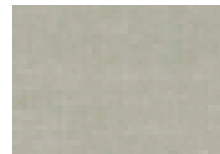
COCOA F1239/12



ESPRESSO F1239/23



GHOST F1239/26



DOVE F1239/18



SILVER F1239/59



STEEL F1239/62



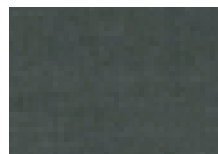
ASH F1239/04



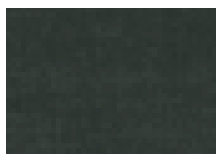
STORM F1239/63



DOLPHIN F1239/17



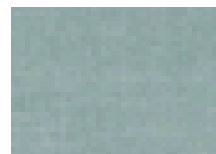
CHARCOAL F1239/09



RAVEN F1239/53



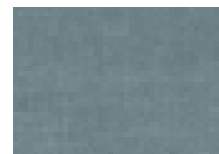
SKY F1239/60



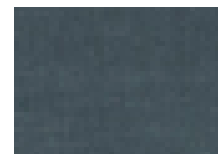
DENIM F1239/16



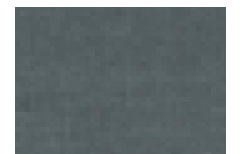
NORDIC F1239/43



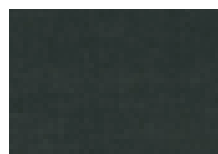
DELFT F1239/15



MIDNIGHT F1239/38



TWILIGHT F1239/66



NAVY F1239/42



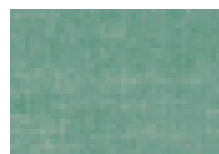
DUCKEGG F1239/19



SURF F1239/64



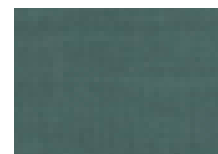
EAU DE NIL F1239/20



SEAFOAM F1239/56



BLUEBIRD F1239/06



KINGFISHER F1239/34



HERB F1239/30



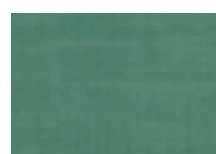
EMERALD F1239/22



FOREST F1239/25



PALM F1239/46



JADE F1239/32



KHAKI F1239/33



MOSS F1239/41



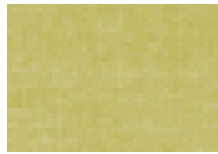
HEMP F1239/29



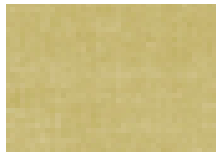
OLIVE F1239/45

# AMALFI FABRIC INDEX CONTINUED

---



CITRON F1239/11



CHARTREUSE F1239/10



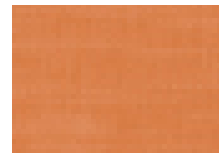
BUTTERCUP F1239/08



ANTIQUE F1239/03



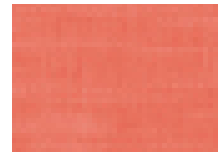
SPICE F1239/61



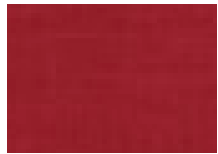
PUMPKIN F1239/51



FLAME F1239/24



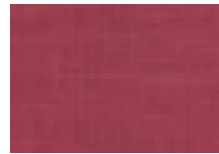
CORAL F1239/13



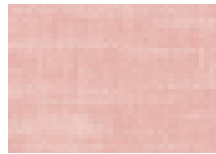
ROUGE F1239/54



RUBY F1239/55



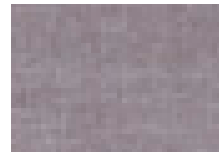
PEONY F1239/49



BLUSH F1239/07



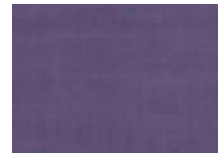
HEATHER F1239/28



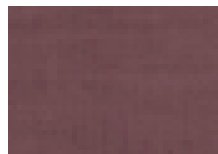
MAUVE F1239/37



DAMSON F1239/14



AMETHYST F1239/02



GRAPE F1239/27



EGGPLANT F1239/21





## MIDORI

---

**Midori is a relaxed, linen blend fabric in a timeless muted palette of natural, mineral tones and pastel hues.**

---

A designer toolkit staple, Midori's soft handle and wide width make this an adaptable sheer fabric for design schemes, easy to use and with a look and feel that adds the perfect touch to easy-living schemes, bringing the feeling of the Amalfi coast to interiors.

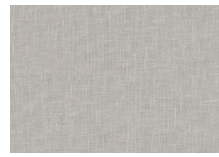
# MIDORI FABRIC INDEX



TRUFFLE F1068/47



PUTTY F1068/37



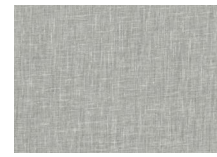
DOVE F1068/11



SMOKE F1068/45



ESPRESSO F1068/15



SLATE F1068/44



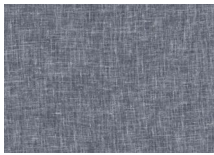
GRANITE F1068/17



CHARCOAL F1068/06



MIST F1068/28



DUSK F1068/13



MEDITERRANEAN F1068/26



AEGEAN F1068/01



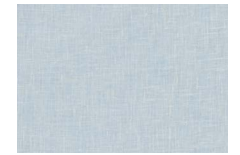
DENIM F1068/10



CHAMBRAY F1068/05



OCEAN F1068/31



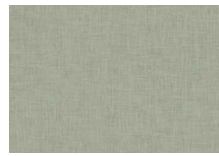
SKY F1068/43



EAU DE NIL F1068/14



SEAFOAM F1068/42



MINERAL F1068/27



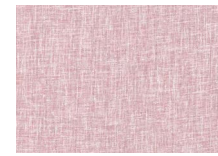
DUCKEGG F1068/12



PEBBLE F1068/34



BLUSH F1068/04



ROSE F1068/40



RASPBERRY F1068/39



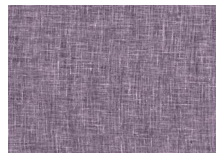
LAVENDER F1068/23



HEATHER F1068/19



LILAC F1068/24



DAMSON F1068/09



CORAL F1068/08



SPICE F1068/46



SAND F1068/41



HONEY F1068/21



BAMBOO F1068/03



CITRON F1068/07



APPLE F1068/02



GOLD F1068/16



PISTACHIO F1068/35



PARSLEY F1068/33



HERB F1068/20



MOCHA F1068/29



IVORY F1068/22



RAFFIA F1068/38



LINEN F1068/25



POLAR F1068/36



OYSTER F1068/32



NATURAL F1068/30



HAZEL F1068/18



# CONTACT DETAILS

---

## **LONDON SHOWROOM - NEW**

Sanderson Design Group  
Unit 23G, Ground Floor, Central Dome,  
Chelsea Harbour Design Centre  
SW10 0XE, London

## **GERMANY SHOWROOM**

Kronenstrasse 4, 76133 Karlsruhe  
+49 721 981 985 60  
verkauf@sandersondesigngroup.com

## **NETHERLANDS SHOWROOM**

ETC Licht & Interieur, Randweg 20,  
4104 AC Culemborg  
+31 65349 3696  
international@sandersondesigngroup.com

---

## **ABOUT CLARKE & CLARKE**

---

Founded in 2009 as the go-to design house defining transitional style in home interiors, Clarke & Clarke offers an eclectic yet distinctive collection of fabrics, wallpapers and home accessories. Born out of a passion for creating beautiful, expressive homes, Clarke & Clarke's spirit and British flair deliver an inclusive sense of glamour for the style conscious. Focusing on luxurious textures and bold colour combinations, Clarke & Clarke's aesthetic runs from whimsical to glamorous and maximalist to sleek, for polished looks embodying British eclecticism.

[clarke-clarke.sandersondesigngroup.com](http://clarke-clarke.sandersondesigngroup.com)

[@clarke\\_clarke\\_interiors](https://www.instagram.com/clarke_clarke_interiors)